

GLOW IN THE PARK

THE LIVING DESERT ZOO AND GARDENS

SUNDAY, APRIL 14, 2024





What is Glow in the Park?

Glow in the Park is a special event held after regular hours at The Living Desert Zoo & Gardens. Enjoy hundreds of illuminated lanterns and larger than life displays in this family-friendly event!

Offerings include:

- Music playing throughout the lantern route
- Specialty food and beverages

Open from 6:30 pm - 10:00 pm, with last admission at 9:00 pm.



What is Sensory Inclusive Night?

The Living Desert is hosting a special edition of their family-friendly Glow in the Park event, designed to be mindful of the sensory-supportive needs of our neurodivergent community.

On Sunday, April 14th we will have:

- Resilience Rooms (2)
- Lower Music Volumes
- Sensory Bags
- Priority entry to Carousel

Tickets

We strongly recommend purchasing general admission tickets online before arriving for a quicker access to the park.

Before gates open at 6:30 pm, you might experience more guests waiting to enter the park.



Scan QR code
for tickets



Animals

For this event, we are highlighting our lanterns! However, some of our animals, like the giraffe and rhino, may be visible during the earlier hours of the night.



Sensory Bags

TLD offers complimentary sensory bags available for check-out, subject to availability. These are available at Guest Services.

What's Included?

- Fidget tools
- Noise canceling headphones
- A reusable map
- Other resources



Resilience Rooms

There will be two resilience rooms offering a calmer environment available for guests.

- **DC House in Watutu Village:** This quiet room will feature periodic talks from one of our keepers about Zoya the leopard.
- **Learning and Impact Building:** Fidget toys and quiet items will be available for play in this quiet room.



Sounds

Music on pathways will be at a lower volume during this event. Some areas will be louder and more active.

In the Carousel Area there are:

- Brighter lights
- Music

In the Interactive Area there are:

- Talking parakeets
- A walkthrough turning tunnel
- Panda games that make noise
- A large animatronic that speaks and moves
- A rain cloud with lights and thunder sounds

There are a few lanterns that make noise:

- A frog near Warthog
- An alligator near Trains
- A dinosaur between Bighorn and Carousel



Scents

Some areas will have unique scents, including:

- Animal habitats such as Rhino and others in the Africa section
- Foods from our outlets and cooking of Asian specialties in Palm Garden

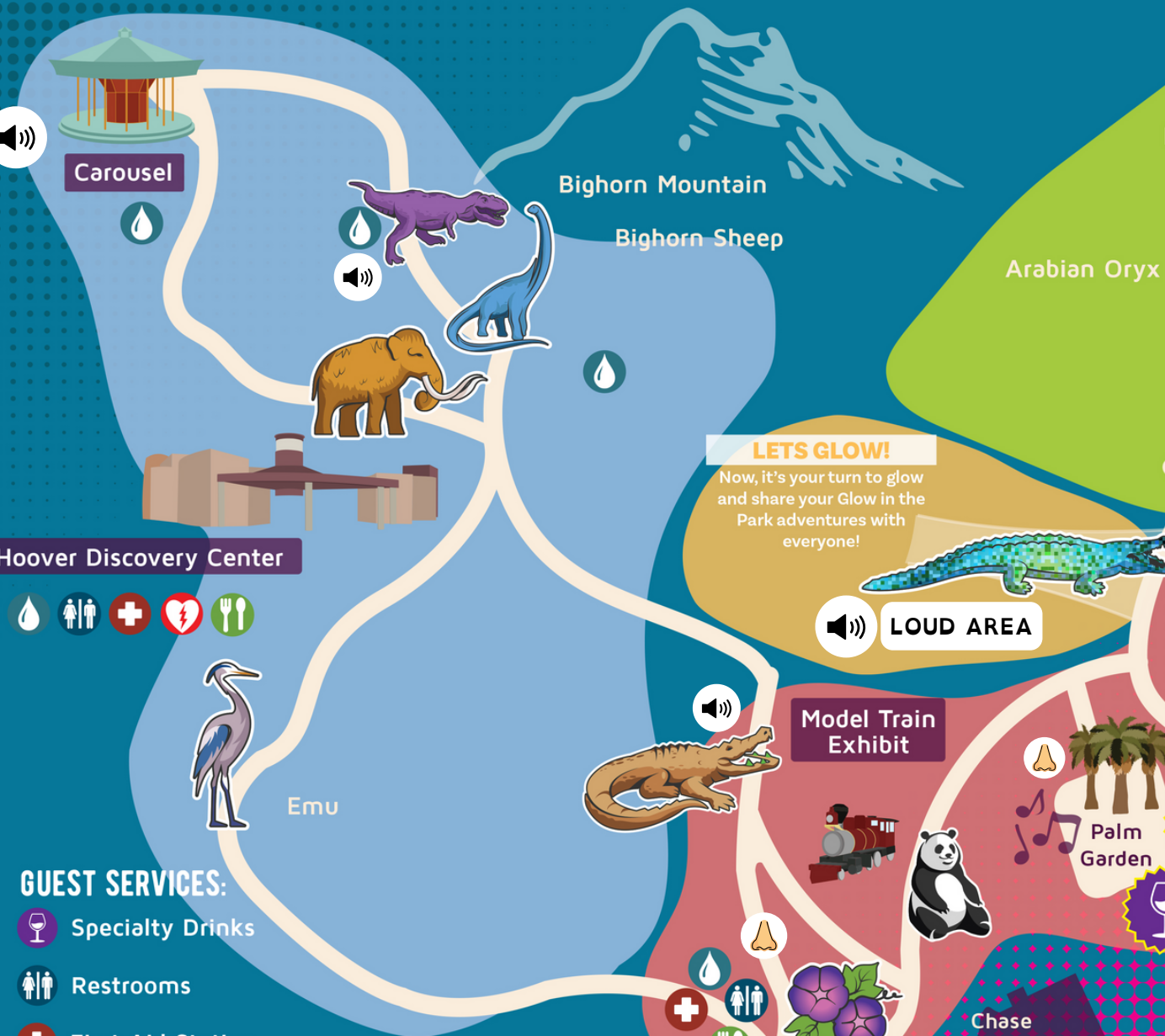
GLOW IN THE PARK

An Evening Event 6:30pm-10:00pm
Select Nights March 16-April 28

LivingDesert.org
#GlowInThePark

JOURNEY TO THE PAST

Travel back in time to discover these creatures from the past, including dinosaurs, ancient elephants, and more!



- SENSORY-INCLUSIVE KEY:**
- Loud Areas
 - High Scent Area
 - Resilience Rooms
 - Sensory Bags
- GUEST SERVICES:**
- Specialty Drinks
 - Restrooms
 - First Aid Station
 - Drinking Water
 - Food and Beverages
 - Specialty Food Items
 - Automated External Defibrillator (AED)
 - Information | Lost and Found Stroller/Wheelchair Rentals

RESILIENCE ROOM

ADVENTURES THROUGH ASIA

Lanterns are a longstanding Asian tradition; many designs and themes have rich symbolism and deep history.

LETS GLOW!
Now, it's your turn to glow and share your Glow in the Park adventures with everyone!

LOUD AREA

Model Train Exhibit

Chase Administration Building

Palm Garden

MAIN ENTRANCE/EXIT



SENSORY BAGS

WILDLIFE WONDERS

The natural world continues to amaze us all with its beauty, resilience, and wonder.



SCAN FOR MAP

