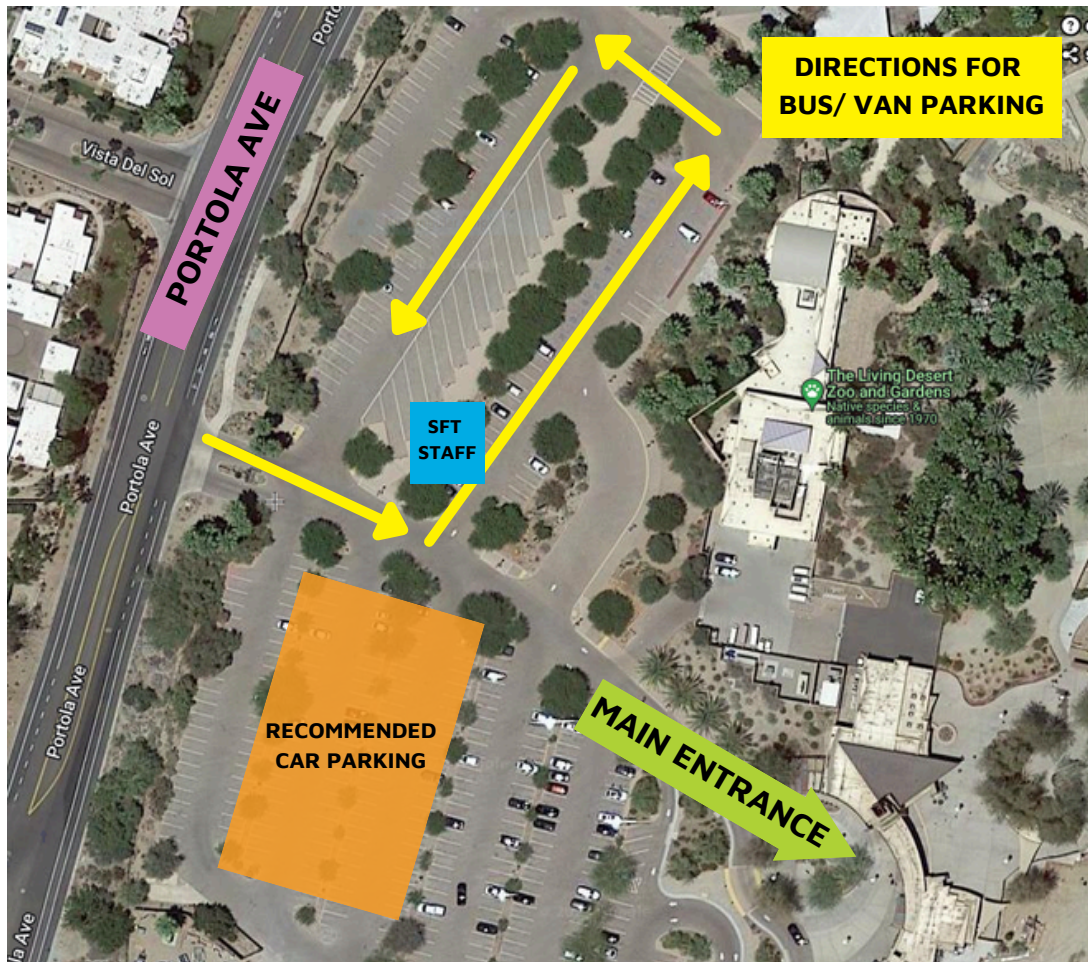


# PARKING GUIDE

## FOR SCHOOL FIELD TRIPS



THE LIVING DESERT ZOO AND GARDENS | 47900 PORTOLA AVENUE PALM DESERT, CA 92260

### ARRIVAL

- Please call or text the School Field Trips Staff at (760) 636-3473 when you are 10 minutes away from arriving. Additionally, if you become delayed, please inform the School Field Trips Staff of your expected arrival time.
- Drivers will follow the Parking Guide and park in the designated area(s).
  - If your group is arriving by bus, **please have all members of your group except the Lead Teacher remain on the bus(es) after parking.**
  - If your group is arriving by personal vehicle, **please have all members of your group meet SFT Staff at the bus parking island after you have parked.**
- The Lead Teacher will meet with the School Field Trips Staff at the bus parking island and work together to:
  - Distribute the School Field Trip Guidelines and Expectations
  - Reconcile any updates to student or chaperone headcounts and sign the Final Headcount Confirmation
  - Arrange lunch transportation and storage. Please have selected teachers/chaperones from your group disembark to load the lunches onto our golf cart(s) for transport.
  - Distribute chaperone stickers received from the School Field Trips Staff
  - Receive and distribute any pre-paid tickets for add-on experiences like the carousel and giraffe feeding
- Your group will be escorted to the Zoo's main entrance, where you will be provided entry through the main gates.